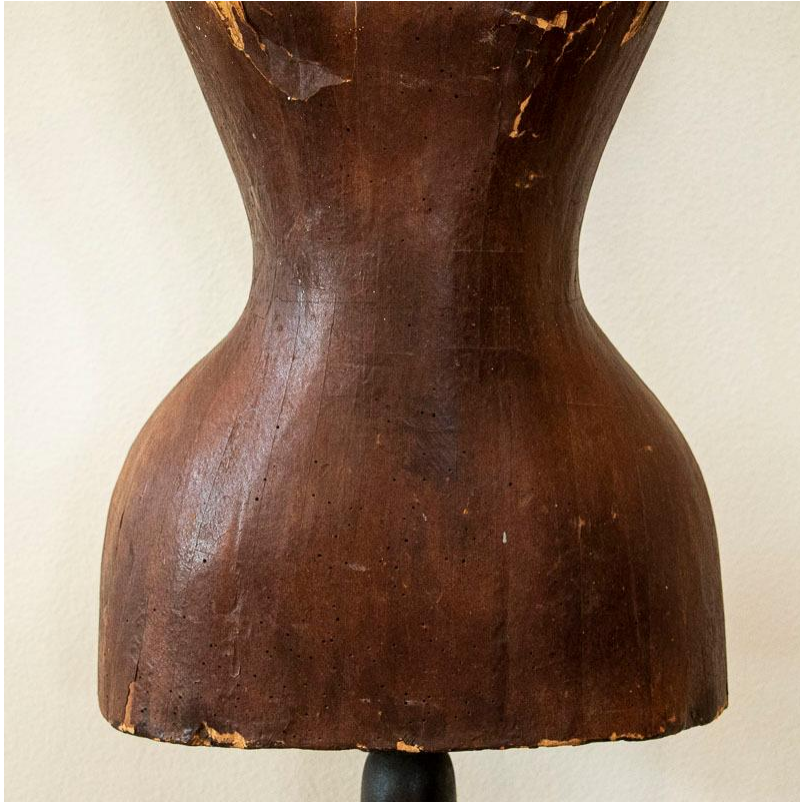


Round Top Ranch Antiques  
2545 Hwy 237  
Round Top, TX 78954  
979-249-5100  
[www.RTRAntiques.com](http://www.RTRAntiques.com)

---

## Authentic Vintage Brown Paper Mache Dress Mannequin



This female dress form or mannequin was made of brown paper mache, now aged and tattered while showing off its authentic vintage appeal. The form shows many signs of wear including some damage to the paper mache around the chest and arm areas (refer to photos as reference). All the age related wear reveals its years of use and separates this mannequin from the many reproductions seen today. The spindle base is black at the top and arms, while the base appears to be a very dark brown stain indicating old parts may have been switched out at some point in the past 75 years (it is also missing some form of round wood screw which does not impact the function/strength of the base). This item is sold in as is, used condition as we found it in Europe; may be missing or have mis-matched parts. The form separates from the spindle base and will ship separately for safely if packaged, or can also ship via Freight service.

- Price: \$325.00
- Year/Circa: 1920-1940
- Origin: Hungary
- Color: Brown
- Dimensions: 14w x 10.5d x 62.25h
- Item #: 32481

